

YEAR

2016

LINK

LUNG WO RD (from MAN YIU ST to LUNG WUI RD)

COVERAGE (B) STATION

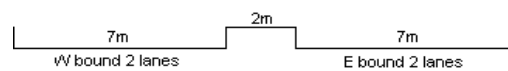
2217

ROAD NETWORK

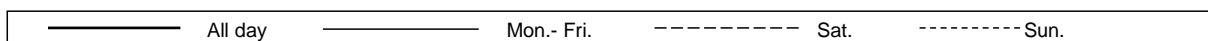
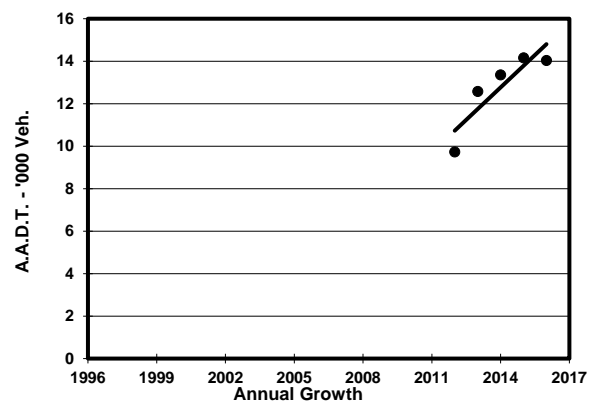
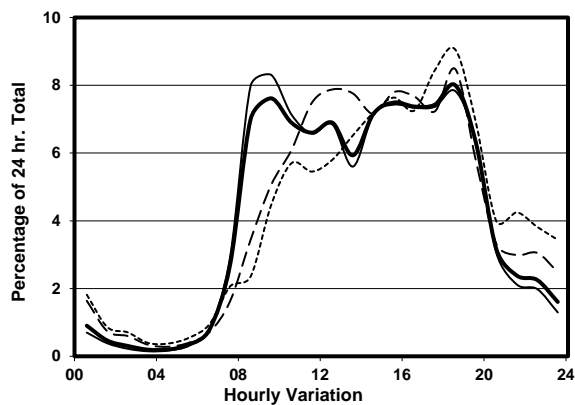
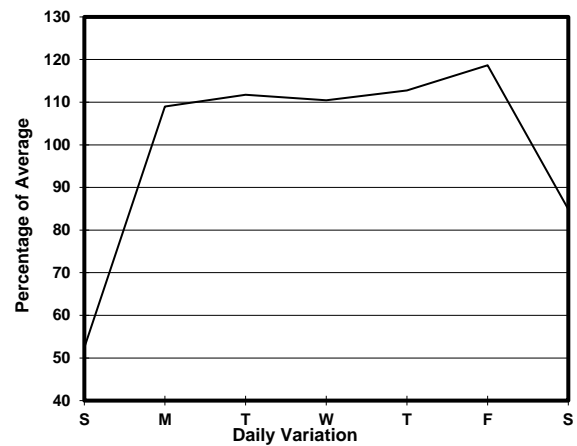
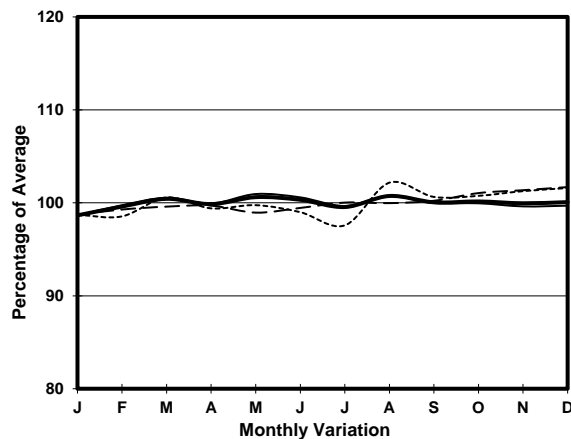
MAJOR

ROAD TYPE

PRIMARY DISTRIBUTOR



1. TRAFFIC FLOW VARIATION AND GROWTH



2. TRAFFIC CHARACTERISTICS (BY DIRECTION)

Parameter	All - Day	Mon. - Fri.	Sat.	Sun.
EAST BOUND				
A.A.D.T.	10530	11940	9880	6050
R 12 / 24 - %	80.2	81.6	77.6	71.1
R 16 / 24 - %	94.8	95.7	92.7	90.5
AM Peak Hour	0900-1000	0800-0900	0900-1000	0900-1000
One-way flow at AM peak hour	770	980	480	270
T - % (AM)	-	8.1	-	-
PM Peak Hour	1800-1900	1800-1900	1800-1900	1800-1900
One-way flow at PM peak hour	880	980	890	560
T - % (PM)	-	8.7	-	-
Prop.of commercial vehicles - 16 hr.	-	7.4	-	-
WEST BOUND				
A.A.D.T.	3500	4270	2350	1500
R 12 / 24 - %	83.7	84.9	78	75.1
R 16 / 24 - %	96.3	96.8	93.3	92.7
AM Peak Hour	0900-1000	0900-1000	0900-1000	0900-1000
One-way flow at AM peak hour	300	390	140	60
T - % (AM)	-	6.4	-	-
PM Peak Hour	1700-1800	1700-1800	1600-1700	1800-1900
One-way flow at PM peak hour	240	300	170	120
T - % (PM)	-	2.3	-	-
Prop.of commercial vehicles - 16 hr.	-	8	-	-

3. OTHER INFORMATION AND COMMENT

4. Vehicle classification and occupancy - Monday to Friday

Time		Class of vehicle									
		Motor	Private	Taxi	Private	PLB	Goods veh.		Non	Fr. Bus	
		Cycle	Car		LB		Light	M & H	Fr. Bus	SD	DD
0700-0800	Pro	3.6	13.3	55.8	0.0	0.0	18.2	6.1	0.0	0.3	2.7
	Ocp	1.0	1.0	2.0	0.0	0.0	1.5	1.0	0.0	1.0	1.0
0800-0900	Pro	2.3	46.2	35.1	1.0	0.0	6.4	1.0	4.7	0.0	3.3
	Ocp	1.0	1.2	2.1	3.7	0.0	1.5	1.7	1.0	0.0	1.0
0900-1000 Peak hour	Pro	0.9	44.0	31.9	0.0	0.0	13.6	1.9	3.2	0.0	4.5
	Ocp	1.0	1.3	2.0	0.0	0.0	1.7	1.0	3.4	0.0	1.0
1000-1100	Pro	2.0	36.2	32.3	0.8	0.0	20.1	1.6	3.5	0.1	3.5
	Ocp	1.0	1.2	1.9	1.0	0.0	1.6	1.3	2.8	1.0	1.0
1100-1200	Pro	1.5	38.8	33.4	1.0	0.0	19.2	2.0	2.5	0.0	1.7
	Ocp	1.0	1.3	2.0	1.5	0.0	1.5	1.5	6.4	0.0	1.0
1200-1300	Pro	1.7	36.8	38.1	1.7	0.0	16.0	3.5	1.7	0.0	0.4
	Ocp	1.0	1.5	2.1	2.3	0.0	1.3	1.4	1.8	0.0	1.0
1300-1400	Pro	0.0	37.4	43.1	0.0	0.0	11.9	3.7	3.7	0.0	0.2
	Ocp	0.0	1.2	2.0	0.0	0.0	1.3	1.3	2.2	0.0	1.0
1400-1500	Pro	4.1	31.0	35.5	0.9	0.0	24.1	2.3	1.8	0.0	0.2
	Ocp	1.0	1.5	2.0	8.5	0.0	1.5	1.0	6.5	0.0	1.0
1500-1600	Pro	0.7	44.9	29.6	0.4	0.0	19.8	2.2	1.9	0.1	0.4
	Ocp	1.0	1.5	1.8	1.0	0.0	1.3	1.0	2.4	1.0	1.0
1600-1700	Pro	0.4	40.2	31.2	3.7	0.0	16.2	3.7	3.7	0.0	1.0
	Ocp	1.0	1.3	2.1	2.3	0.0	1.6	1.6	4.6	0.0	1.0
1700-1800	Pro	2.9	55.1	22.7	2.1	0.0	8.4	0.0	8.0	0.0	0.7
	Ocp	1.3	1.2	2.0	3.0	0.0	1.7	0.0	7.3	0.0	1.0
1800-1900	Pro	1.4	50.2	32.1	0.4	0.4	7.6	0.4	6.9	0.0	0.7
	Ocp	1.3	1.5	2.2	2.0	12.0	1.4	1.0	6.7	0.0	1.0
1900-2000	Pro	0.9	61.2	23.9	0.0	0.0	2.2	0.4	10.4	0.1	1.0
	Ocp	1.0	1.3	2.3	0.0	0.0	1.2	1.0	4.2	1.0	1.0
2000-2100	Pro	2.2	50.3	38.0	0.0	0.0	7.8	0.0	1.1	0.0	0.6
	Ocp	1.5	1.3	2.0	0.0	0.0	1.7	0.0	1.0	0.0	1.0
2100-2200	Pro	4.1	34.1	54.6	0.0	0.0	2.7	0.0	4.1	0.0	0.3
	Ocp	1.0	1.5	2.5	0.0	0.0	2.5	0.0	10.7	0.0	1.0
2200-2300	Pro	0.0	50.4	44.8	0.0	0.0	1.4	1.4	1.4	0.0	0.7
	Ocp	0.0	1.6	2.2	0.0	0.0	3.0	1.0	1.0	0.0	1.0
16 hours	Pro	1.7	43.2	33.7	0.9	0.1	13.0	1.8	4.1	0.1	1.6
	Ocp	1.1	1.3	2.1	2.8	12.0	1.5	1.3	4.5	1.0	1.0

Legend

Pro. Proportion of vehicles in % (Sum may not add up to 100% due to figure rounding)*

Ocp. Average occupancy of vehicles including both driver and passengers*

M&H Medium and Heavy

***** All traffic data are collected from combined bounds except for one way traffic